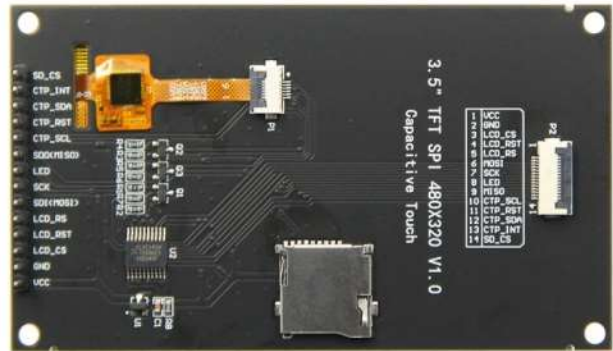


# 3.5inch IPS SPI Module ST7796

---

# Product Picture

---





## Product Description

- 3.5inch color screen with 320x480 resolution of 65K colors and rich display colors
- The upgrade adopts IPS full view panel, with good visual angle
- On board level conversion circuit, compatible with 5V and 3.3V MCU
- Adopting a 4-wire SPI serial bus to save I/O pins
- Optional capacitive touch/no touch function for modules
- Module input supports 2.54 pin interface and FPC extension interface
- Equipped with micro TF card slot for easy storage expansion
- Provide rich example learning programs (ESP32/STM32/Arduino UNO&Mage2560/C51/CH32)
- Provide low-level driver technical support

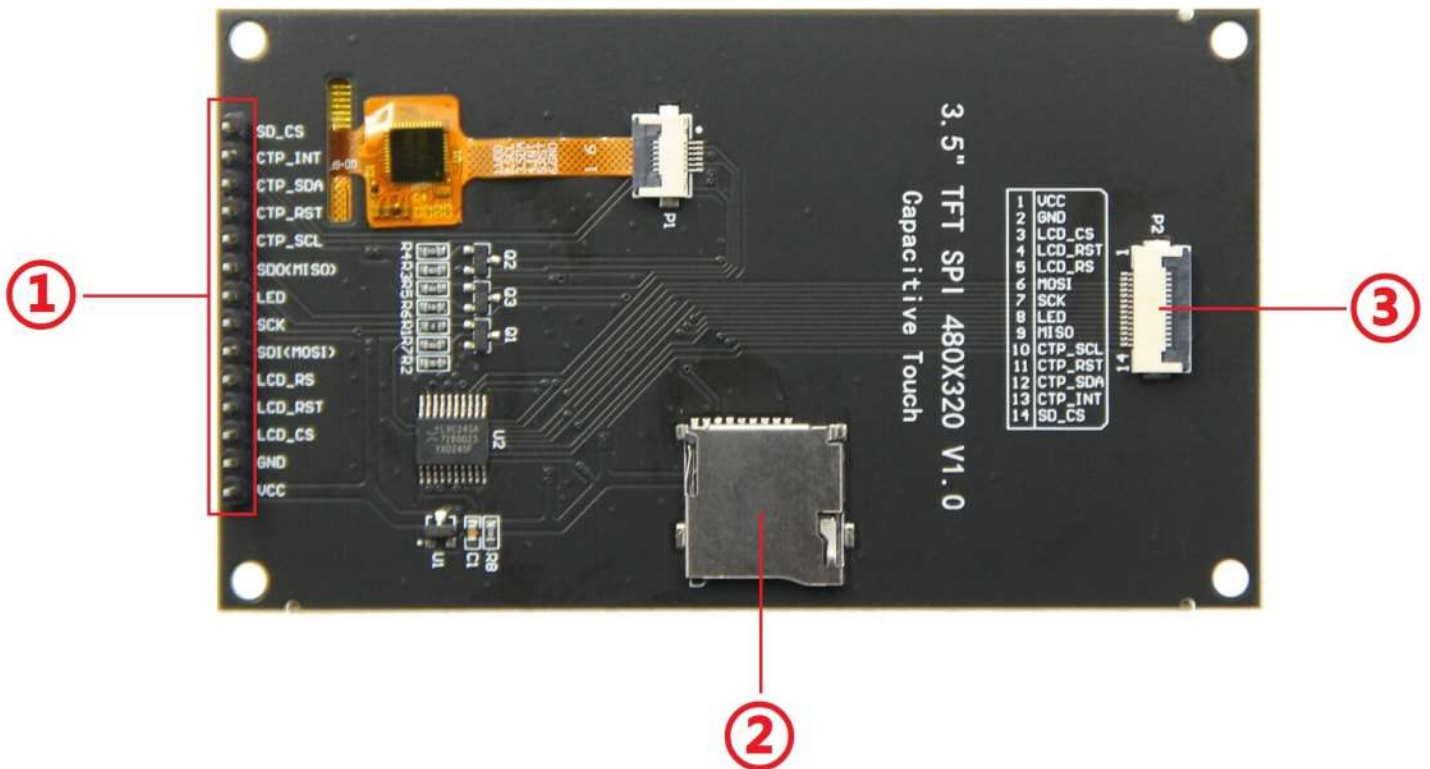
- Multiple tests for module aging can meet military level standards, supporting long-term stable work

## Product Parameters

Name	Parameter
<b>LCD Parameters</b>	
Screen Size	3.5 inch
Screen Type	IPS
Resolution	320xRGBx480 (pixels)
Active Area (AA area)	48.96(W)x73.44(H)(mm)
Number of Colors(Max)	16.7M
Driver IC	ST7796U
Display Interface	4-Line SPI
Pixel Size	0.153(H)x0.153(mm)
View Angle	ALL 0° CLOCK
Brightness(TYP)	300(cd/m <sup>2</sup> )
Backlight Type	White LED*6
Operation Temperature	-10~50(°C)
Storage Temperature	-20~60(°C)
<b>Touch Screen Parameters</b>	
Touch Active Area	3.5 inch
Touch Screen Type	Capacitive Touch Screen
Touch Screen Resolution	320x480(pixels)
Driver IC	FT6336U
Touch Screen Visual Area	49.56(w)x74.04(H)(mm)
Communication Interface	IIC
Operation Temperature	-20~70(°C)
Storage Temperature	-30~80(°C)
<b>Size Parameters</b>	
TFT Outline Size	55.50±0.2(W)x84.96±0.2(H)x2.5±0.1(D)(mm)(Excluding cables and adhesive backing)
Touch Screen Outline Size	55.50±0.2(W)x84.96±0.2(H)x0.8 (D)(mm)(Excluding cables and adhesive backing)

Module Outline Size	Have Touch Screen:55.5(W)x98.0(H)x12.98(D)(mm)(including Pin Header) NO Touch Screen:55.5(W)x98.0(H)x14.28(D)(mm)(including Pin Header)
<b>Electrical Parameters</b>	
Working Voltage	5.0 V
Backlight Current	95 mA
Power	0.5W
<b>Other</b>	
SKU	NO Touch Screen : MSP3525 Have Touch Screen : MSP3526
Interface	14P 2.54mm spacing Header and 0.5mm spacing FPC seat
Weight(including package)	MSP3525: 73g MSP3526: 82g

## Interface Definition



### Interface Function Description

Number	Interface	Function Description
①	<b>14 Pin Header</b>	2.54mm spacing row pins, module signal input pins
②	<b>Micro SD Slot</b>	Insert a Micro SD card to expand storage space, such as storing big data content such as fonts and images
③	<b>14P FPC</b>	0.5mm FPC terminal, used for module signal input with the same function as ①

### ■ Pin Function Description

Number	Pin Label	
1	<b>VCC</b>	Power positive
2	<b>GND</b>	Power ground
3	<b>LCD_CS</b>	LCD selection control signal, Low level active
4	<b>LCD_RST</b>	LCD reset control signal, Low level reset
5	<b>LCD_RS</b>	LCD command / data selection control signal High level: data, low level: command
6	<b>SDI(MOSI)</b>	SPI bus write data signal(SD card and LCD screen used together)
7	<b>SCK</b>	SPI bus clock signal(SD card and LCD screen used together)
8	<b>LED</b>	LCD backlight control signal (If you need control, please connect the pins. If you don't need control, you can skip it)
9	<b>SDO(MISO)</b>	SPI bus read data signal (SD card and LCD screen used together)
10	<b>CTP_SCL</b>	Capacitive touch screen IIC bus clock signal (modules without touch screens do not need to be connected)
11	<b>CTP_RST</b>	Capacitor touch screen reset control signal, low-level reset (modules without touch screens do not need to be connected)
12	<b>CTP_SDA</b>	Capacitive touch screen IIC bus data signal (modules without touch screens do not need to be connected)
13	<b>CTP_INT</b>	Capacitor touch screen IIC bus touch interrupt signal, when generating touch, input low level to the main control (modules without touch screens do not need to be connected)
14	<b>SD_CS</b>	SD card selection control signal, low level active (without SD card function, can be disconnected)